



Socket SoMo[®] 650 Persistence Mode Release Notes

Date: August 2, 2011

This README file contains important information regarding the Socket SoMo 650 Persistence mode feature available in Wi-Fi Companion (WFC) and Enhanced Wi-Fi Companion (e-WFC).

The instructions in this README are based upon having either ActiveSync 4.5 or higher or Windows Mobile Device Center installed on your host PC. You can download the newest version of ActiveSync host PC software from Microsoft's web site at:

<http://www.microsoft.com/download/en/details.aspx?id=15>

README TABLE OF CONTENTS

1.0 OVERVIEW

2.0 INSTALL PROCEDURE

3.0 USAGE

4.0 TECHNICAL SUPPORT INFORMATION

1.0 Overview

The Socket SoMo 650 Persistence mode feature has been created based on feedback from users experiencing connectivity issues in wireless networking environments with low or poor wireless coverage. When enabled, Persistence mode modifies Socket's roaming algorithm to compensate for these environments and deliver more robust connectivity.

Persistence mode is accomplished through modifications to Socket's roaming algorithm. This modification results in a more persistent wireless connection to an access point for a longer period of time before attempting to roam to other access points in network.

Another feature of Persistence mode is that the Socket radio tower and signal bars are removed to give a consistent look and feel to users accustomed to the Microsoft Wireless Zero Configuration wireless connection indicator. When in Persistence mode, to return to Socket's WFC or e-WFC wireless applications, select Start -> Programs and select either the Wi-Fi Companion or Enhanced WFC applications.

2.0 Install procedure

There are two possible methods for installing the CAB file. You can connect your SoMo to a desktop computer and use either ActiveSync or Windows Mobile Device Center. Alternately, you can use a storage card (SD or CF).

2.1 Using ActiveSync or Windows Mobile Device Center

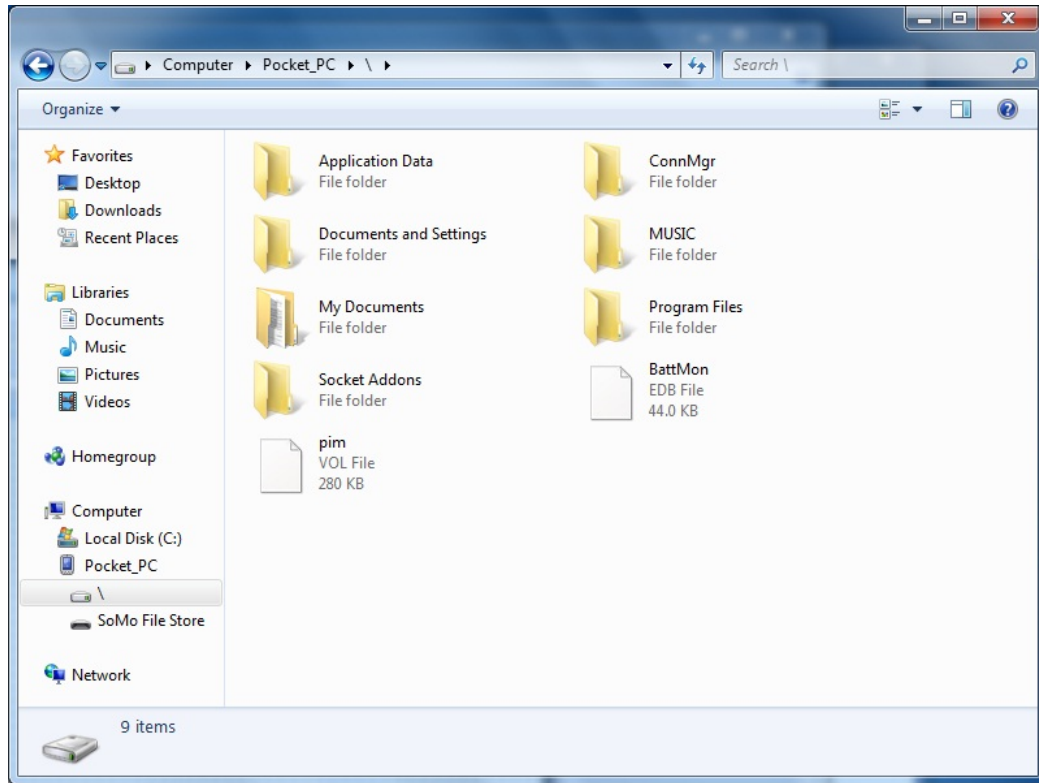
To use ActiveSync or Windows Mobile Device Center you will need to connect your SoMo to your desktop computer using the provided sync cable.

Windows Mobile Device Center (For Windows Vista or later operating system):

1. Once your device is connected you should see this screen:



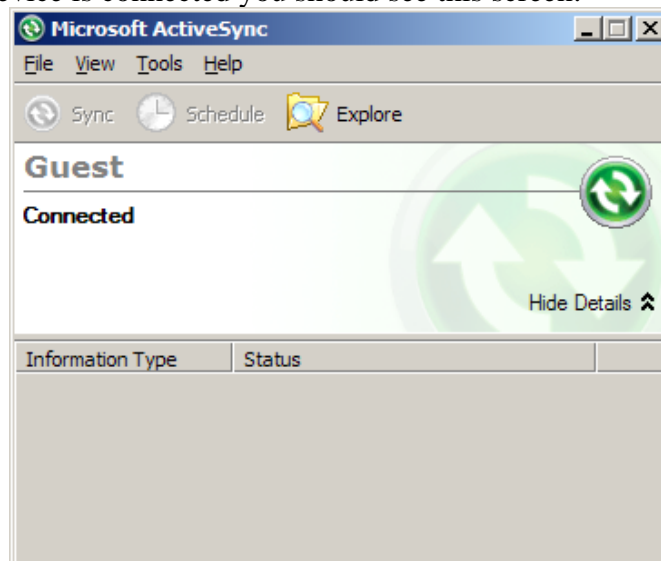
2. Select File Management and browse to the devices' internal storage.



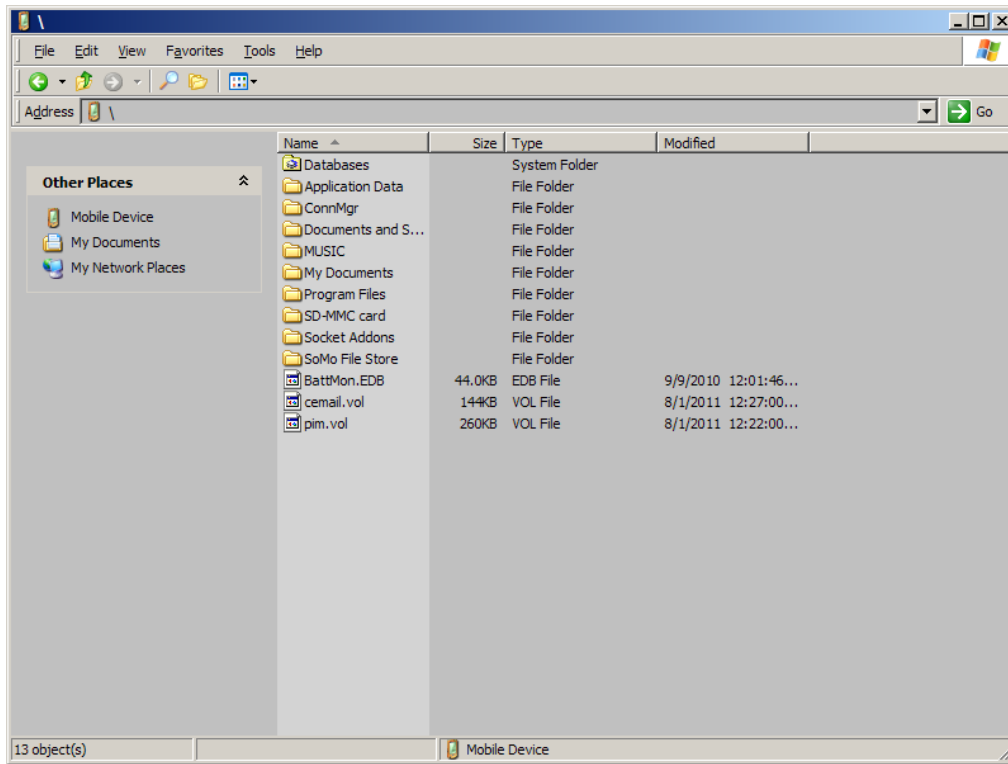
3. Copy the CAB file into this directory. Proceed to “Installing the CAB” on page 5.

ActiveSync (For Windows XP or earlier operating system):

1. Once your device is connected you should see this screen:



2. Select Explore. This will bring up a window showing the device's internal storage. Double-click on My Windows Mobile-Based Device. You should now see the following:



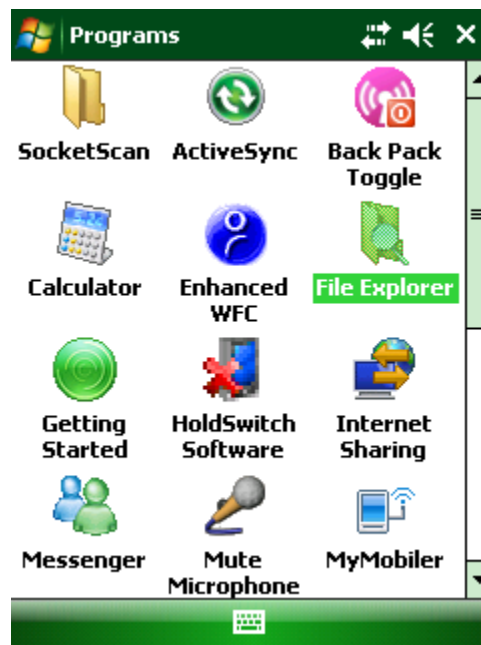
3. Copy the CAB file into this directory. Proceed to “Installing the CAB” on the next page.

Installing the CAB

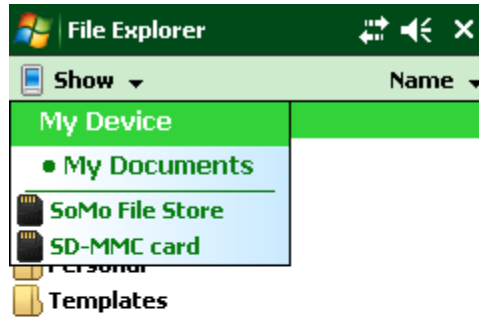
*** Note, installing the CAB file will cause your device to restart. Please save any application information prior to installing. ***

Now that the CAB file is on your SoMo, disconnect it from your desktop computer. Next, navigate on your device to the location where you copied the CAB file.

1. Open File Explorer. Tap Start | Programs | File Explorer.



2. Select “My Device” from the drop down menu.



3. You should see the CAB you copied over. Tap on it; this will install the software.

2.2 Using a Storage Card

To install the Socket SoMo 650 WFC or e-WFC software with Persistence mode you will need either a Secure Digital or Compact Flash storage card to transfer the CAB file to your device.

1. Copy the CAB file to your storage card.
2. Insert the storage card into your device.
3. Locate the CAB file on your storage card.
4. Tap the CAB to install the software.
5. When the install completes you should be prompted to reset your device. If not, please reset it now.

3.0 Usage

There are two default behaviors depending on if you are using Wi-Fi Companion (WFC) or our Enhanced Wi-Fi Companion (e-WFC) software.

If you are using Wi-Fi Companion the default is for Persistence mode to be enabled. You

do not need to take any further action unless you wish to switch to Fast roaming.

If you are using Enhanced Wi-Fi Companion the default is Fast roaming and you will need to take the following steps to enable Persistence mode:

Note: Switching to Fast roaming in Wi-Fi Companion follows this same procedure.

1. Open Enhanced Wi-Fi Companion. Tap Start | Programs | Enhanced WFC.

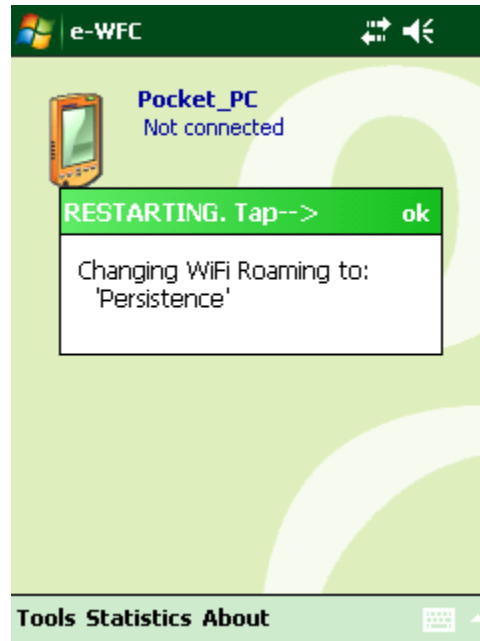


2. Once Enhanced Wi-Fi Companion is open you can find the roaming mode by opening the Tools menu and selecting the Roaming menu item.



3. Select Persistence. You will see a pop-up message indicating that the Wi-Fi Roaming mode is being changed. Click the OK button in the top right of the box.

This will reset your device.



After the device resets you will now be in Persistence mode.

4.0 Technical support information

Online knowledge base: http://support.socketmobile.com/EU_S1a.asp

Online requests: Register your product and submit an inquiry.

<http://www.socketmobile.com/support/registration/>

Phone: Worldwide +1-510-933-3020

USA/Canada +1-800-279-1390

EU +49 9401 5299 036

You can track new product releases, software updates and technical bulletins by visiting Socket's web page at www.socketmobile.com